

July 28, 2022

6:00 PM

# 30% Design Community Meeting

## Site 129-M-SE-2

Welcome! This meeting will begin shortly.



**Orange County  
Public Schools**

# Site 129-M-SE-2

## Meeting Agenda

July 28, 2022, 6:00 PM

- Welcome – School Board Member Johanna López
- Introductions – Lauren Roth, Public Relations
- Project Update – Architect: David Torbert, AIA, NCARB  
Contractor: Walker Construction
- Questions and Answers
- Adjournment

**SCHENKELSHULTZ**  
ARCHITECTURE

***Welcome Message from  
District 2 Board Member  
Johanna López***



***Introductions by Assistant  
Director, Public Relations***

**Lauren Roth**



# Rezoning Process

School Board Policy JC

Step 1 - Superintendent commences rezoning

Step 2 - Calendar (Timeline) developed

Step 3 - Calendar shared

Step 4 - Research, data collection and meetings with internal stakeholders

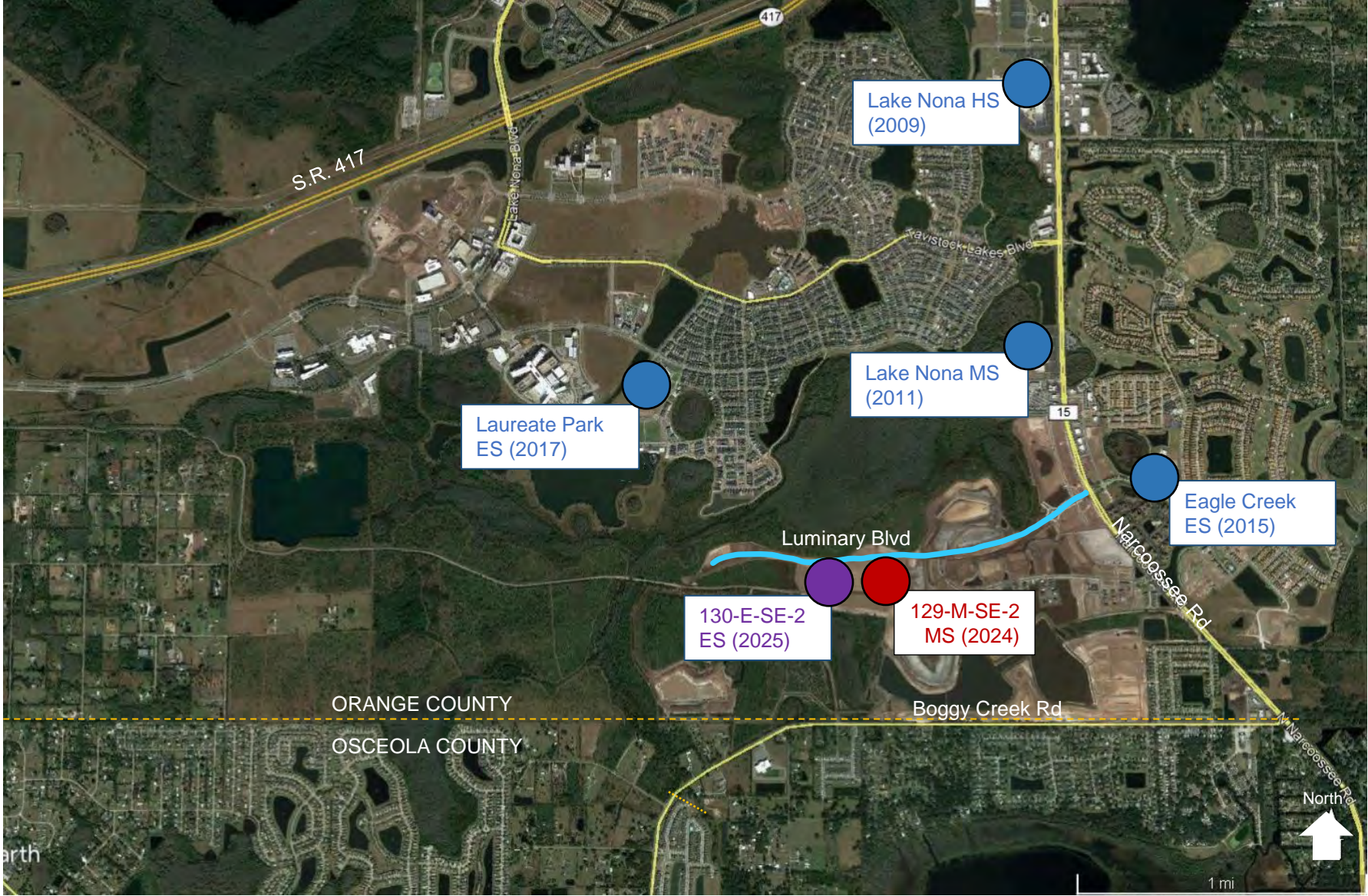
**Step 5 - Community Meeting(s) *around September 2022***

**Step 6 - Rule Development Workshop *around October 2022***

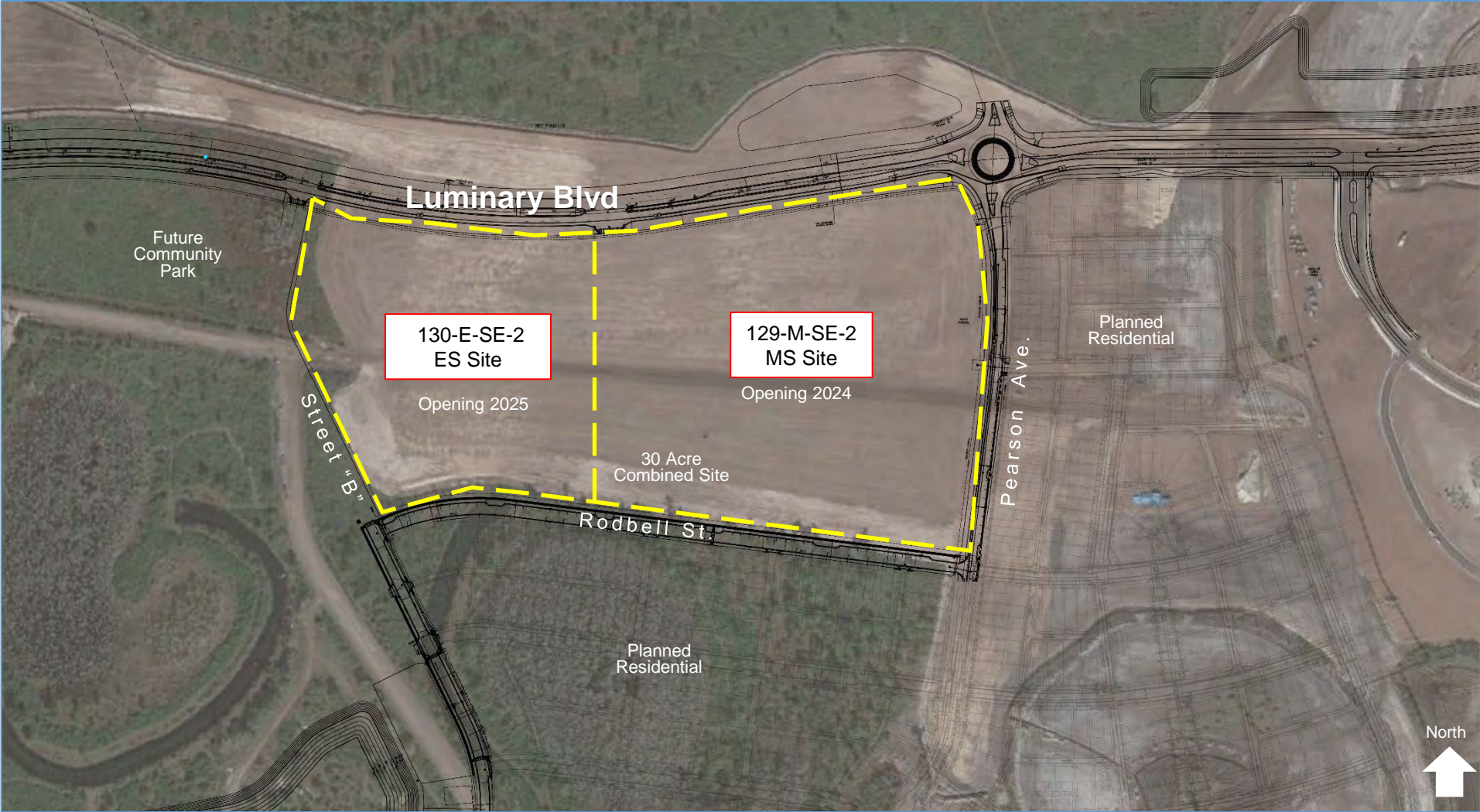
**Step 7 - Public Hearing *around November 2022***

Step 8 - Storage of materials

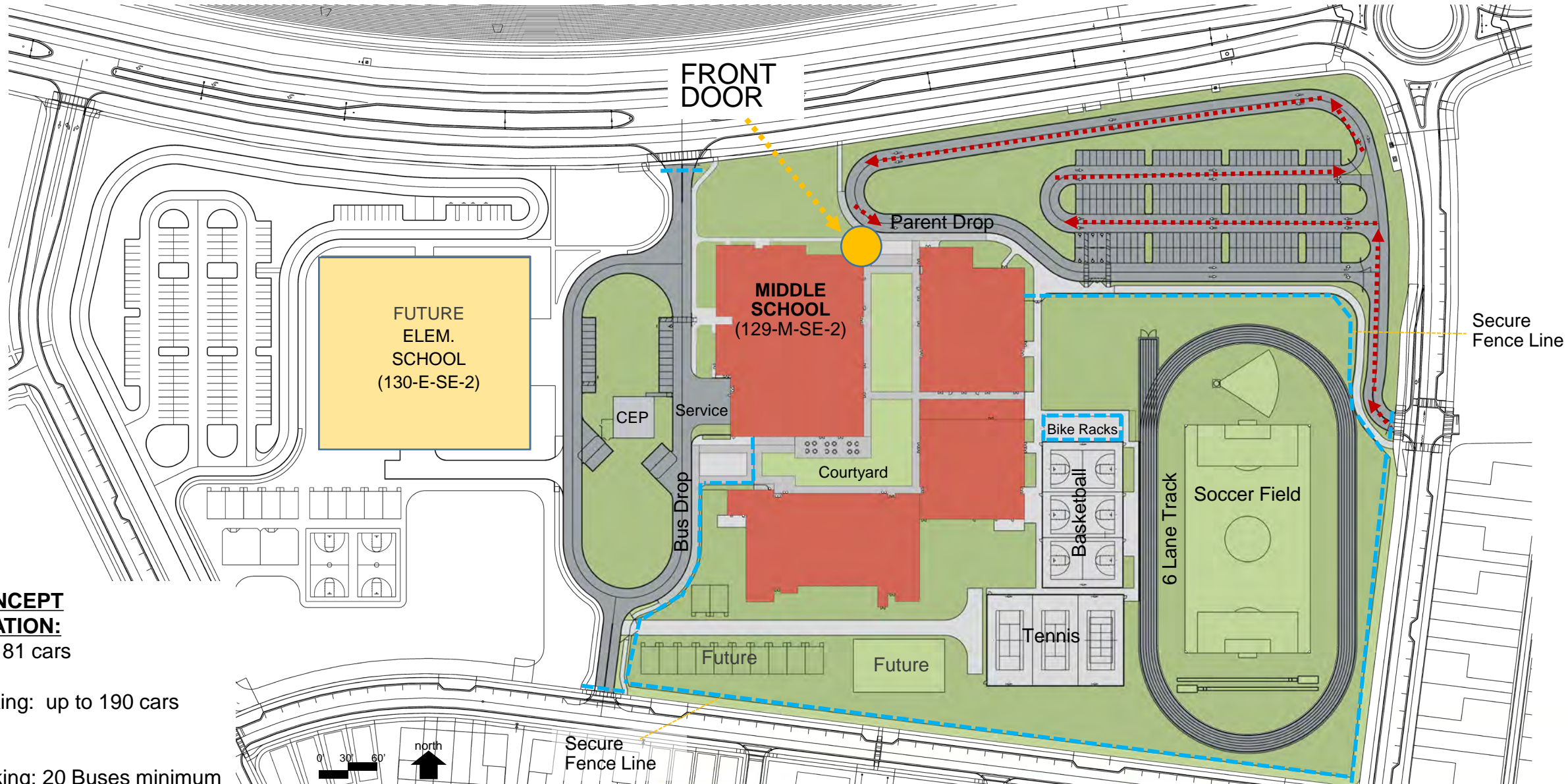
# Surrounding Context



# Site Aerial Map



# Site Plan



## **SITE CONCEPT INFORMATION:**





Parking: 181 cars

Car Stacking: up to 190 cars (12.6%)

Bus Stacking: 20 Buses minimum



# The Stats

-  Project Budget \$40,000,000
-  1,350 Students
-  16+ Acres
-  Opening 2024

# Visioning : Imagine your new school

**Survey Questions from the 10% Community Meeting**  
**Over 150 people participated in the online survey**

- What is the **MOST** important thing that is needed in this new school?
- What do you like in your current school that you want to keep in your new school?
- What in your current school would you like to see changed/not included in your new school?
- What new physical/facilities features do you want to see in your new school?
- What new academic/curriculum do you want to see in your new school?
- What are the most essential skills you believe students need to gain from this new school?
- What are ways in which you would like to see the community engage/use the new school?



# Visioning : Imagine your new school

- The new school will have:
  - Classrooms
  - Science Labs
  - CTE Labs
  - Art Labs
  - Gymnasium
  - Cafeteria
  - Office Spaces
  - Athletic Amenities
  - Car and Bus Loops
  - Visitor Parking
  - Secure Single Entry
  - Advanced Technology
  - Sustainable Building Systems
- Additional spaces or programs may be added based on the suggestions and responses from the survey



# The Results



# Flexibility & Collaboration

- Flex spaces (technical resource centers)
- 21<sup>st</sup> Century Media Center (it's about more than books)
- Flexible furniture
- Core elements (Media, Cafeteria, Gym) planned for expansion

Conceptual Imagery



# Technology

- WiFi connectivity throughout
- One to one (computers to students)
- “Help Desk” and Genius Bar as part of Media Center



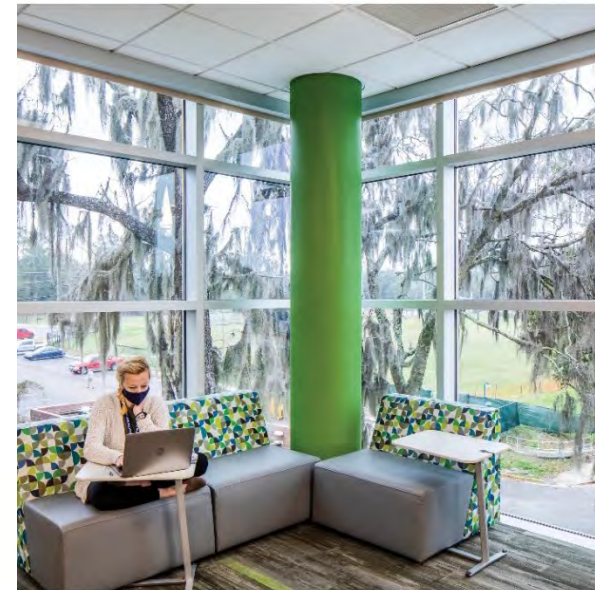
# Safety & Security

- Secure Single-Entry Point (Sally Port) at Front Door
- Secure Courtyard
- Security System (camera, card readers, intrusion detection)



# Health & Wellness

- Biophilia
- Color Psychology
- Support & Counseling spaces



Biophilia and connection to nature



Color psychology and affects on learning



Additional support / counseling spaces

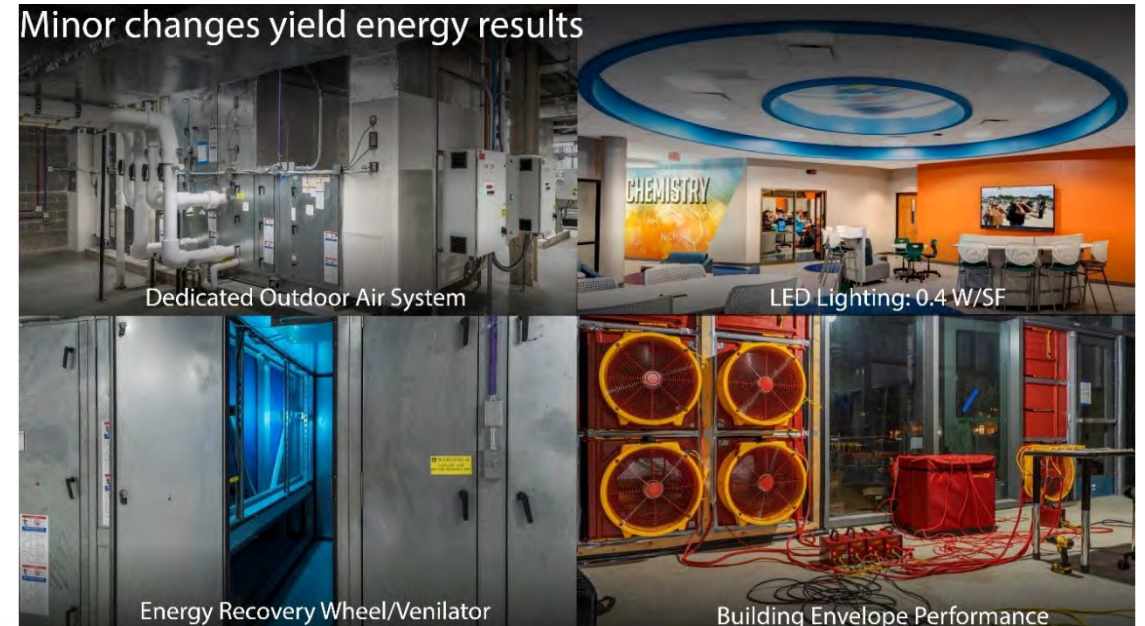
# Outdoor Learning

- Art & Agri-Sciences Patios
- Enclosed Courtyard
- Covered Outdoor dining



# Sustainability

- High Performance Energy Design
- Low "EUI" (Energy Use Intensity)
- Tight Building Envelope
- Future "Net Zero" Considerations



# Sustainability 129-M-SE-2

## Sustainable Design Criteria



Site 129-M-SE-2

## Building

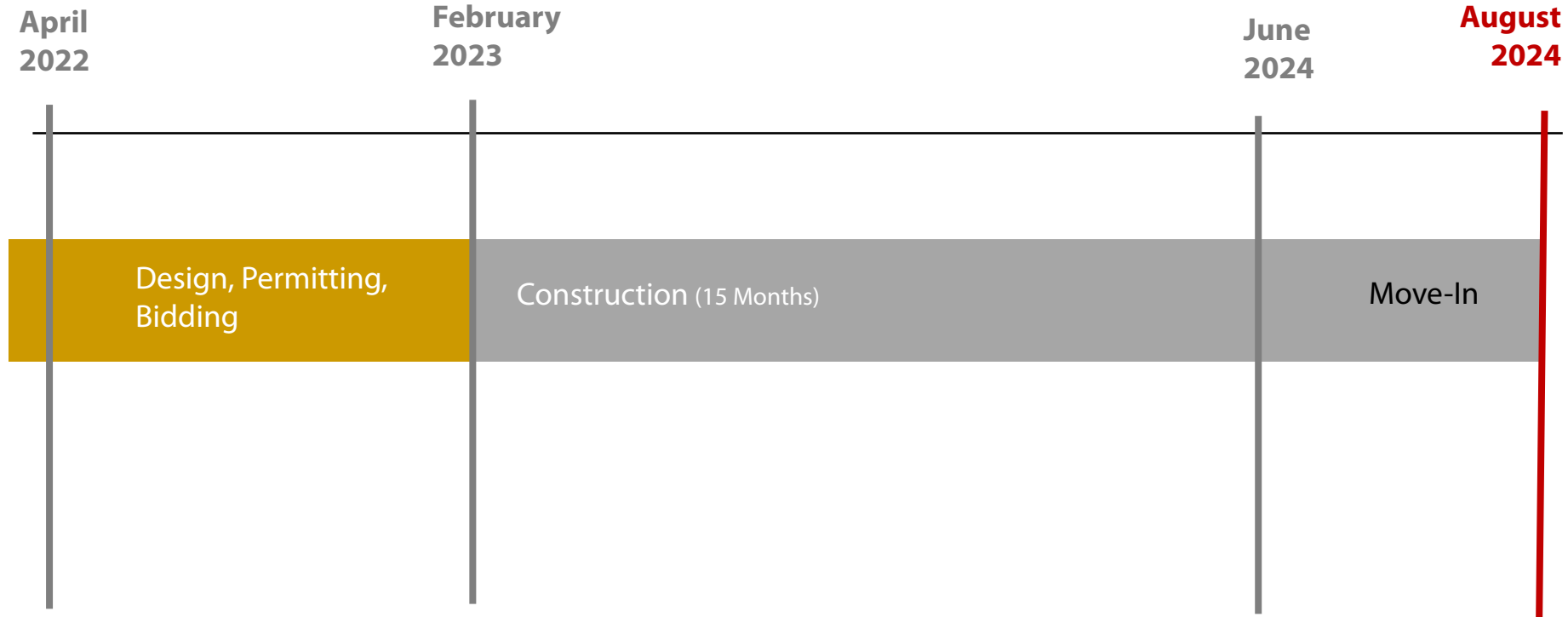
- 10% more energy efficient than ASHRAE 90.1 standard
- High Efficiency Chillers (15% energy reduction)
- Light colored roof to reduce heat gain and improves energy performance
- Energy Efficient LED Lighting
- Energy Star rated equipment
- Water saving toilets, faucets, and fixtures
- All classrooms have daylighting
- Over 75% of ALL spaces have daylighting
- Thermal efficient windows/glazing

## Site

- Native/low water plants – reduce water consumption
- Low Impact Design (LID) stormwater design



# Schedule



# Questions and Answers